

Fujifilm Thermal Printers. ASK 2000 and ASK 4000

Professional printing quality has never been so accessible



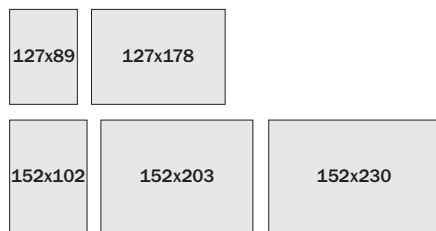
Choice of two models

The Fujifilm ASK range of printers offers photographic quality printing, high speed output and complete flexibility. Compact in size and compatible with any PC – Win 2000 or Win XP, using a Windows driver they produce a range of print options. Being compact they are portable so they are the ideal printers for on-location and event printing and offer the optimum solution where instant images are required in an in-house environment.

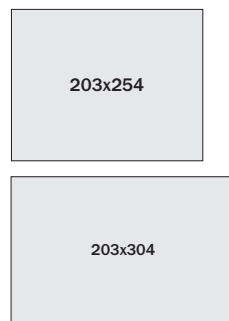
Various print sizes

Using a convenient roll paper system the ASK printers offer a wide range of print size options. The ASK 2000 can deliver five different print sizes and has the capacity to deliver 600 6 x 4 prints from a single roll of paper, whilst the ASK 4000 can produce up to 200 8 x 10 prints.

ASK- 2000

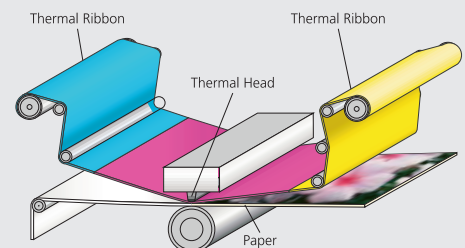


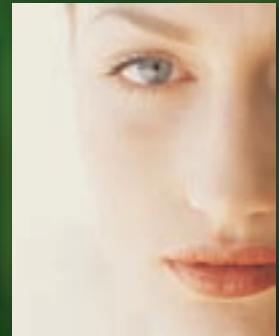
ASK- 4000



Dye Diffusion Thermal Transfer Printing

An ink ribbon coated with dye is heated by a thermal head and the dye is transferred onto special coated paper, forming visible images. Density and gradation of the print can be controlled by varying the input energy of the thermal head. The resulting rich gradation creates beautiful, natural looking prints resembling traditional photographs. A protective layer of over-coating ensures the quality of the images is preserved.





Specifications

	ASK 2000	ASK 4000
Printing Method	Dye Sublimation Thermal Transfer	Dye Sublimation Thermal Transfer
Print Head	300 dpi Dual Line Head	300 dpi Dual Line Head
Resolution	300x600 dpi	300x600 dpi
Graduation	24 bit (16.7 Million Colours)	24 bit (16.7 Million Colours)
Max print width	154mm	203mm
Print size	5x3.5", 6x4", 5x7", 6x8", 6x9", 6*4"x2	8x10", 8x12"
Media Capacity	600 prints per roll (6x4")	200 prints per roll (8x10")
Print speed	Approx 8 seconds per print (6x4")	40 seconds per print (8x10")
Buffer Memory	64 MB (32 MBx2)	64 MB (32 MBx2)
Interface	USB 2.0	USB 2.0
Printer Driver	Windows 2000/XP	Windows 2000/XP
Software Development Kit (upon request)	Windows 2000/XP	Windows 2000/XP
Paper type	Roll Paper	203mm Roll paper (200prints/roll)
Power	AC100v - 240v	AC100v - 240v
Dimensions	W300mmxD410mmxH355mm	W370mmxD350mmxH400mm
Weight	25kg (excluding paper)	28 kg (excluding paper)
Power Consumption	300 Watts Maximum	250 Watts Maximum

For a demonstration or to find your nearest stockist please call 01234 217724
www.fujifilm.co.uk/minilabs